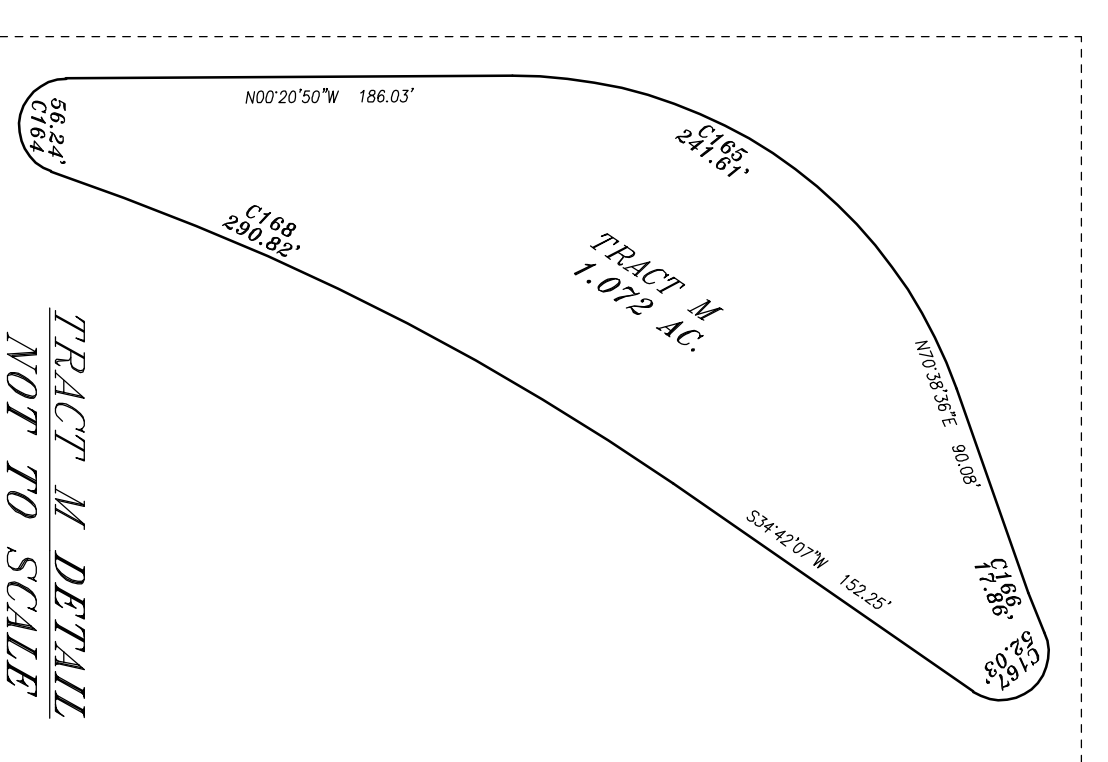


RANCHOS DE CABALLOS

A PORTION OF LAND IN A PORTION OF SECTION 28, AND A PORTION OF THE
SOUTHWEST 1/4 OF SECTION 27, TOWNSHIP 8 SOUTH, RANGE 14 EAST, N.M.P.M.,
LINCOLN COUNTY
NEW MEXICO

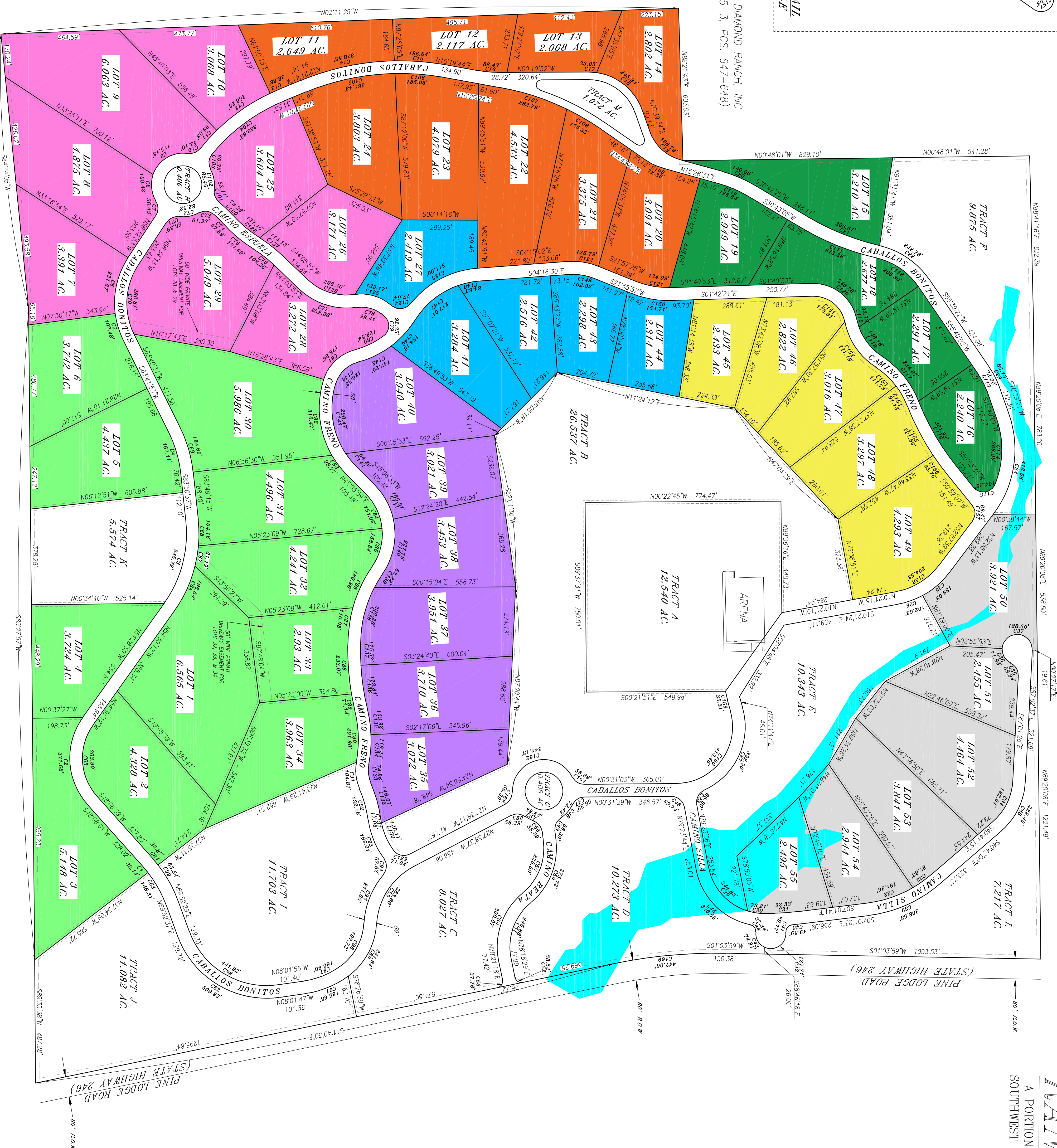
LEGEND

- PHASE 1 (LOTS 50-55)
- PHASE 2 (LOTS 45-49)
- PHASE 3 (LOTS 27, 41-44)
- PHASE 4 (LOTS 35-40)
- PHASE 5 (LOTS 7-10, 25, 26, 28, 29)
- PHASE 6 (LOTS 11-14, 20-24)
- PHASE 7 (LOTS 15-19)
- PHASE 8 (LOTS 1-6, 30-34)
- 15' PUBLIC UTILITY EASEMENT
- 7.5' PUBLIC UTILITY EASEMENT
- APPROXIMATE LOCATION OF 100 YEAR FLOOD ZONE
(TAKEN FROM FILED & RECORDED SUB. PLAT)



FLYING W DIAMOND RANCH, INC.
(BK. 1995-3,
PGS. 647-648)

FLYING W DIAMOND RANCH, INC.
(BK. 1995-3, PGS. 647-648)



OWNER	INDEXING INFORMATION FOR COUNTY CLERK	SUBMISSION
RANCHOS DE CABALLOS, LLC	SECTIONS 27 & 28	RANCHOS DE CABALLOS

HARCROW SURVEYING, LLC
2310 W. MAIN ST. ALBUQUERQUE, NM 87102
PH: (505) 764-2128
harcrow@harcrow.com

DATE: JULY 11-14, 2021
APPROVED BY: [Signature]

SCALE: 1"=200'
0 200 400 FEET

